

# Parking & Transportation Overview

George Mason University

August 2015

Josh Cantor

Director, Parking & Transportation



# What is Parking & Transportation?

- Parking Services
  - Office staff
  - Enforcement Technicians
  - Garage/Event staff
- Mason Shuttles
  - Shift Supervisors
  - Drivers
- Administrative Staff
  - Director: Josh Cantor
  - Parking Services Coordinator: Ann Moran
  - Transportation Coordinator: Marina Budimir
- Parking & Transportation Advisory Committee
  - Faculty, staff, & student reps

# Parking & Transportation Budget

- Self-funded auxiliary
  - Receives no tuition dollars or general funds
  - Must pay for all expenses with parking revenue and some student fee (about \$88/student)
- Overall budget is \$17.3 million annually
  - Goal to not draw down maintenance reserves as has been done in the past to pay for projects and cover deficits

# Parking & Transportation Budget

- Expenses
  - Debt service-\$6 million annually
    - Rappahannock River Deck-\$3m
    - Shenandoah Deck-\$1m
    - Founders Hall garage-\$700,000
    - Parking decks cost \$15,000-\$20,000/space to build
      - \$3000/space in average surface lot to build
      - Founders Hall(below ground): \$30,000/space to build
  - Operations(SP+/Standard Parking): \$3.6 million
  - Transportation: \$4.9 million(shuttles/CUE)
  - Leases, maintenance, projects

# Parking & Transportation Budget

- Revenues
  - Permit Revenue: \$9.9 million (projected FY16)
    - About \$1.9 million offsets a portion of transportation expenses
  - Visitor Revenue: \$3.1 million
  - Citation Revenue: \$700,000
  - Student Fees: \$3 million (offsets Transportation costs)

# Parking & Transportation Budget

- Due to annual deficits
  - Reduced expenses by \$500,000 under SP+/Standard Parking contract over last 3 years
  - Reduced expenditures on lot paving/projects
  - Generated more revenue than budgeted

# FY16 Parking Fees

- Fairfax/SciTech General Permit: \$390 annually (\$450-resident students)
- Arlington General Permit: \$425
- Shenandoah & Mason Pond Decks: \$675 annually
- Rappahannock River Deck & Founders Hall Garage: \$550 annually
- Lot I: \$550 annually
- Lot J: \$500 annually
- Lot R: \$575 annually
- Lot M/P(Field House): \$265 annually
- West Campus Lot : \$150 annually (\$195-resident students)
  - Less than half the price of general permit
  - Convenient shuttle service every 15-20 minutes from lot

# Transportation Programs

- Commuter Choice Pre-Tax Transit Benefit
  - up to \$130/month for full-time employees
  - Limited number of complimentary parking passes
  - Discounted daily passes/deck validations
- Carpool Programs
  - Preferred Parking
  - Rebate Program for Reserved Lots/Decks (20%-40%/semester)
  - Carpool Zones in Lot A / Rappahannock River Deck
  - Can use Zimride ([zimride.com/mason](http://zimride.com/mason)) to find/share rides



# Bicycle Programs

- [Bike.gmu.edu](http://Bike.gmu.edu)
- Recognized as Bicycle Friendly University in 2010 (one of 26 colleges at that time)
- Bicycle usage doubled on campus in past four years
- Have bike parking for 1400 bikes on Fairfax Campus
  - 400 bike spaces under shelters/cover
- Bicycle Commuter Choice Benefit
  - For full-time and some part-time employees
  - \$20 vouchers at local bike shops monthly if ride 8x/month
- Bike Registration
  - Give out free bike locks and lights
- Bikeshare
  - Capital Bikeshare at Arlington Campus
  - Working with City of Fairfax on joint future program

# Parking Services

- Parking Services
  - Operated by SP+/Standard Parking
  - In 1st year of new contract (July 2015-June 2020)
    - Contract renewed in 2015
    - Been on campus since July 2005
  - Doesn't receive any profit or revenue share
    - Is paid agreed upon management fee(\$75,000/yr)
    - Can receive incentive fee of \$30,000-\$75,000/yr
    - Operates within agreed upon annual budget(approximately \$3.6m for FY16)

# Mason Shuttles

- Overall ridership of nearly 600,000 per year
- Operated by Reston Limousine
  - In 2nd year of current contract (July 2014-June 2019)
    - Contract renewed in 2014
    - Been on campus since 2002
  - All buses and drivers are provided by Reston Limo
  - Charter bus service
    - Discounted Mason rates

# Mason Shuttles

## Routes

- Fairfax/SciTech(formerly Prince William)
  - Started as van in 2002
  - Operates 6:30am-11pm M-F and 8am-7pm Sat/Sun
  - Ridership has grown from 1000 trips/month to 15,000 trips/month
  - Added departures on half-hour in August 2012
  - Added weekend service August 2012

# Mason Shuttles

- Mason-Metro route
  - Started in Spring 2007 running 6am-10am & 3-7pm M-F
  - Added mid-day and evening service in 2008
  - Added weekend service in 2009
  - Added rush hour shuttles Spring 2011
  - Added Metro Express Fall 2012; added 2<sup>nd</sup> Metro Express shuttle in Spring 2013
  - Ridership grown from 4,000 passenger trips/month to 30,000 trips/month

# Mason Shuttles

- Gunston's Go-Bus
  - Started as pilot project with Student Government in Spring 2009 (one bus Thursday-Sunday)
  - Added 2<sup>nd</sup> bus in Fall 2009
  - Started running 7/days week in Fall 2009
  - Provides service to University Mall, Ridge Top Road, Fair Oaks Mall, Fairfax Corner, Fair Lakes, Old Town Fairfax
  - Added expanded service starting at 7:30am in Fall 2013 to serve commuter needs

# Mason Shuttles

- Burke Center VRE Shuttle
  - Recommendation of Transportation Master Plan
  - Started service in September 2013
  - Allows faculty, staff, and students to take VRE train from Manassas and then connect to campus
  - Also the free VRE garage can be used as a park'n'ride facility for those commuting from the south of Burke.
  - People can walk and ride to the Burke Center VRE and use the shuttle as well

# CUE Bus

- Mason has had a long partnership with the City of Fairfax
- Mason pays annual subsidy to Fairfax so students and employees can ride the bus for free with Mason ID
  - Subsidy increased from \$400,000 annually to \$540,000 annually in July 2010 to \$720,000 annually in July 2012
- About 330,000 passenger trips made annually by Mason students and employees
- Study of CUE/Mason Shuttle coordination was conducted in 2014-15.
- Service to Old Town Fairfax is being highlighted as part of **#VisionFairfaxMason** planning process.



# Parking Inventory

- About 14,800 spaces total
  - 11,590 at Fairfax
  - 2,094 at PWC (includes Freedom Center)
  - 1,139 at Arlington
    - Lease 567 (Metropolitan Garage)/Own 572 (Founders Hall)
    - Lease 150 more spaces after 6pm

# Parking Space Detail

- 6,760 general area spaces
- 560 resident spaces(Lot R/Townhouses/Beacon Hall)
- 3,200 reserved deck spaces
- 600 reserved lot spaces(Lots I&J)
- 1,100 faculty/staff general spaces(added more in Lot J in summer 2013 and in Rappahannock River Deck in 2015)
- 900 visitor spaces(garage and meters)

# Parking Loss/Addition

- Loss of parking spaces since 2005
  - Lot F (1000), Lot E (200), Lot J (120), Lot B (600), Lot I (300), Lot H (75), Lot R (300), Arlington Lot (300), Discovery B (100), Lot H (300), Lot R (175)
- Parking spaces added since 2005
  - Shenandoah Deck (1200), West Campus Lot (600), Rappahannock River Deck (2650-phase II built at same time as phase I), PV Lot (150), Lot A/K (125), Founders Hall (443), Hylton (400), Beacon Hall/The Shops (205), Tower Lot (300), and Metropolitan Garage (567)

# Future Projects Impacting Parking

- Housing VIII B (600 new beds) and Academic VII (CHHS building on Lot H) will lead to possible need for Parking Deck IV (1000 spaces-\$27 million)
- Sandy Creek Transit Center
  - Fairfax County funding \$1 million, will be building 6 bus bays and other commuter amenities
  - Construction planned May-October 2016
- Bull Run Hall Addition
- Potomac Science Center
- Point of View

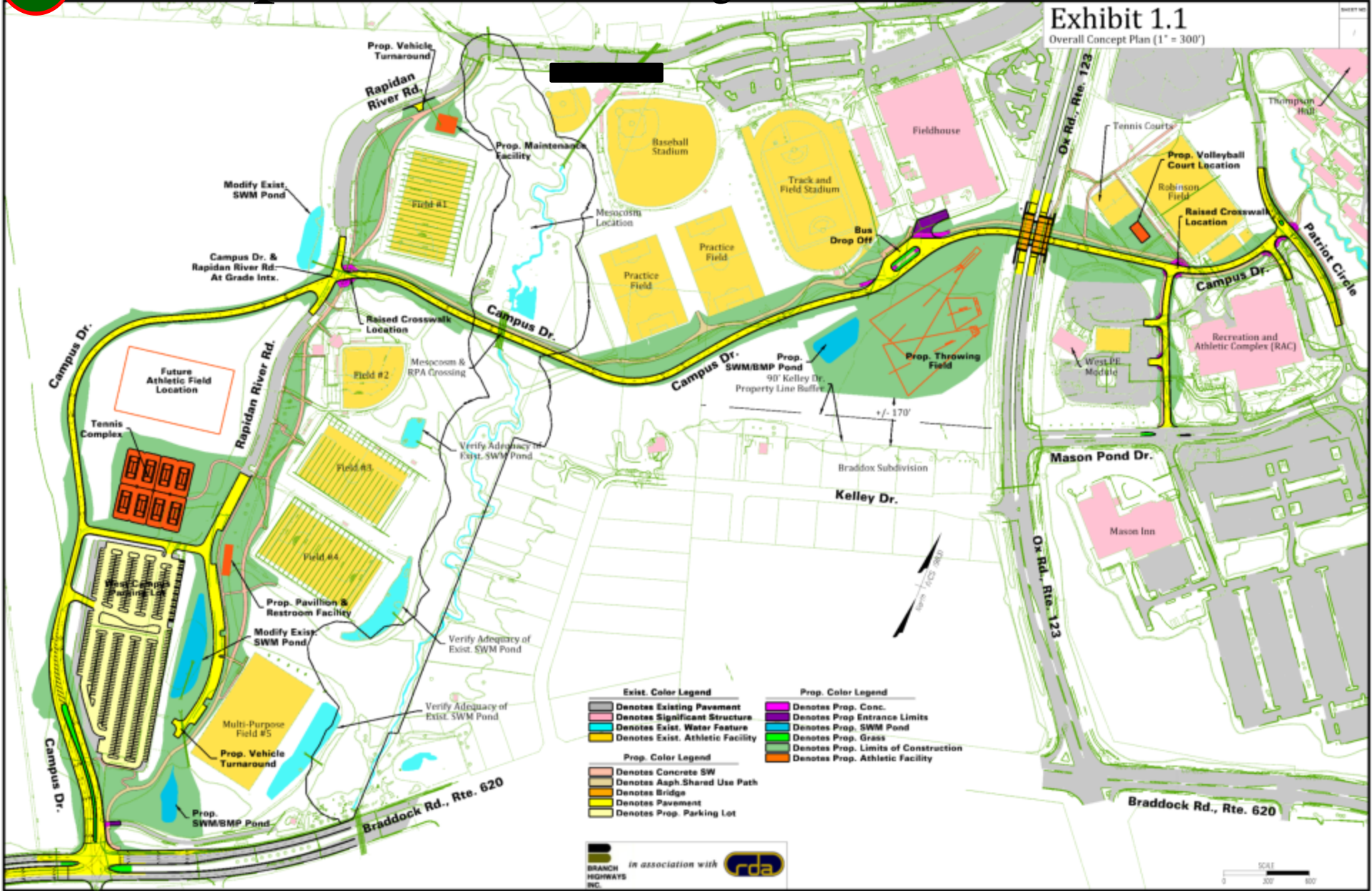
# Campus Drive

- Funded by VDOT: \$15 million
- Very public process involving City, County, VDOT, and adjacent neighborhoods
- Underpass under Rt 123 connecting east/west campus
- New campus entrance at West Campus Lot
- New road behind Field House
- Divert 20-30% peak traffic off Braddock/Rt123
- Opened April 2015



1

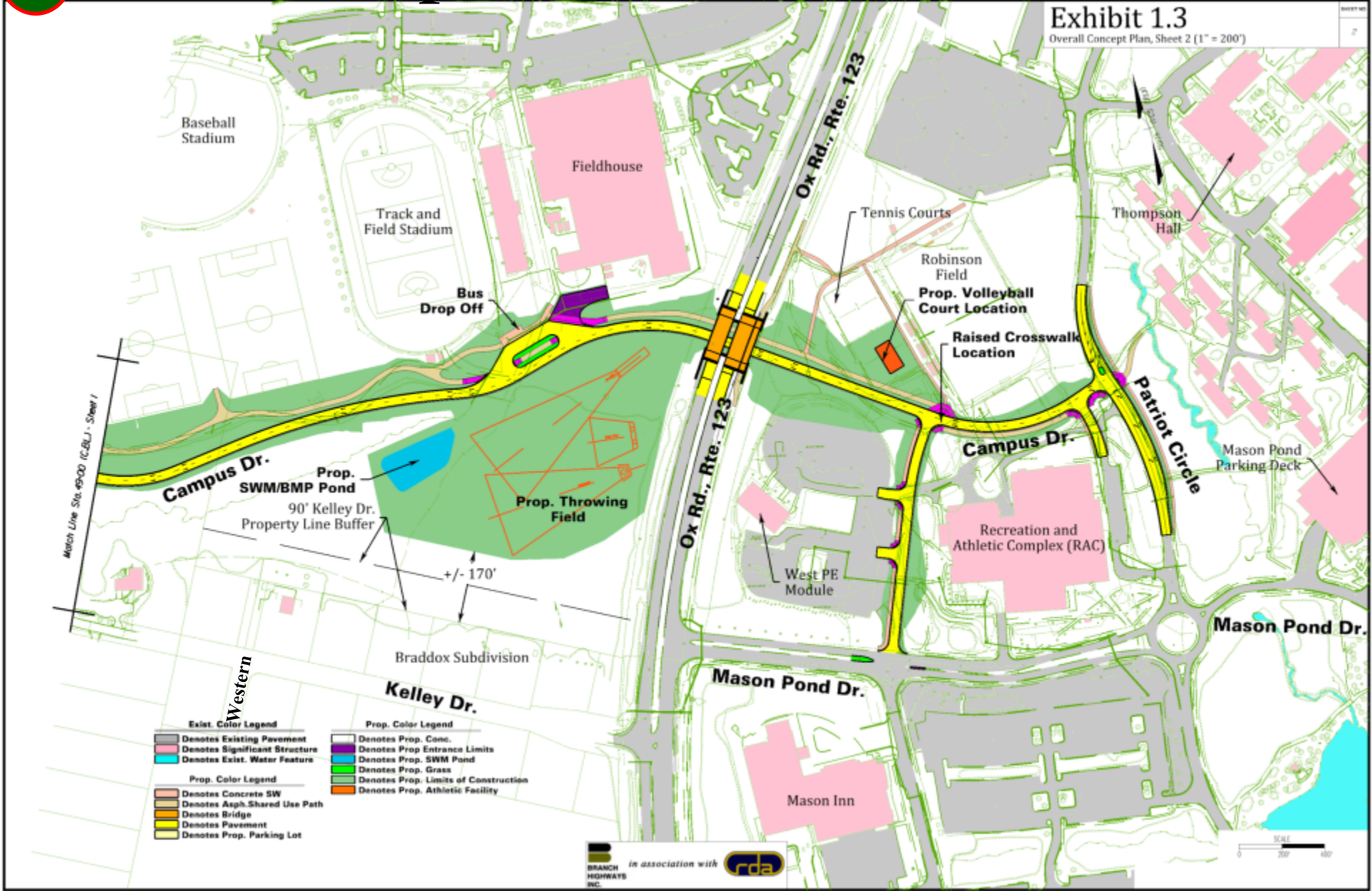
# Campus Drive Project Overview



1

# East Campus

Exhibit 1.3  
Overall Concept Plan, Sheet 2 (1" = 200')



- |                                 |                                      |
|---------------------------------|--------------------------------------|
| <b>Exist. Color Legend</b>      | <b>Prop. Color Legend</b>            |
| Denotes Existing Pavement       | Denotes Prop. Conc.                  |
| Denotes Significant Structure   | Denotes Prop. Entrance Limits        |
| Denotes Exist. Water Feature    | Denotes Prop. SWM Pond               |
| <b>Prop. Color Legend</b>       | Denotes Prop. Grass                  |
| Denotes Concrete SW             | Denotes Prop. Limits of Construction |
| Denotes Asphalt Shared Use Path | Denotes Prop. Athletic Facility      |
| Denotes Bridge                  |                                      |
| Denotes Pavement                |                                      |
| Denotes Prop. Parking Lot       |                                      |

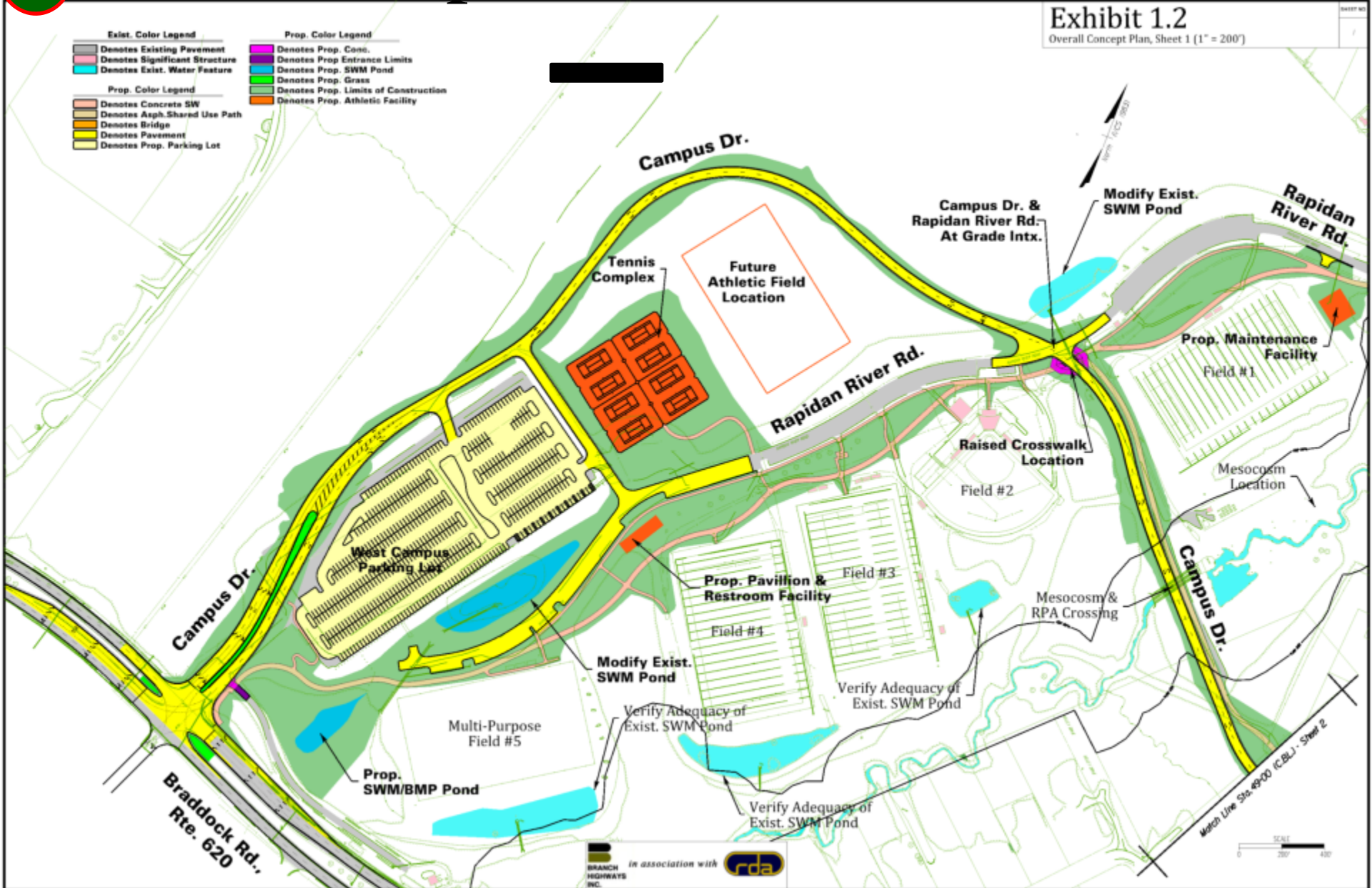




1

# West Campus

Exhibit 1.2  
Overall Concept Plan, Sheet 1 (1" = 200')

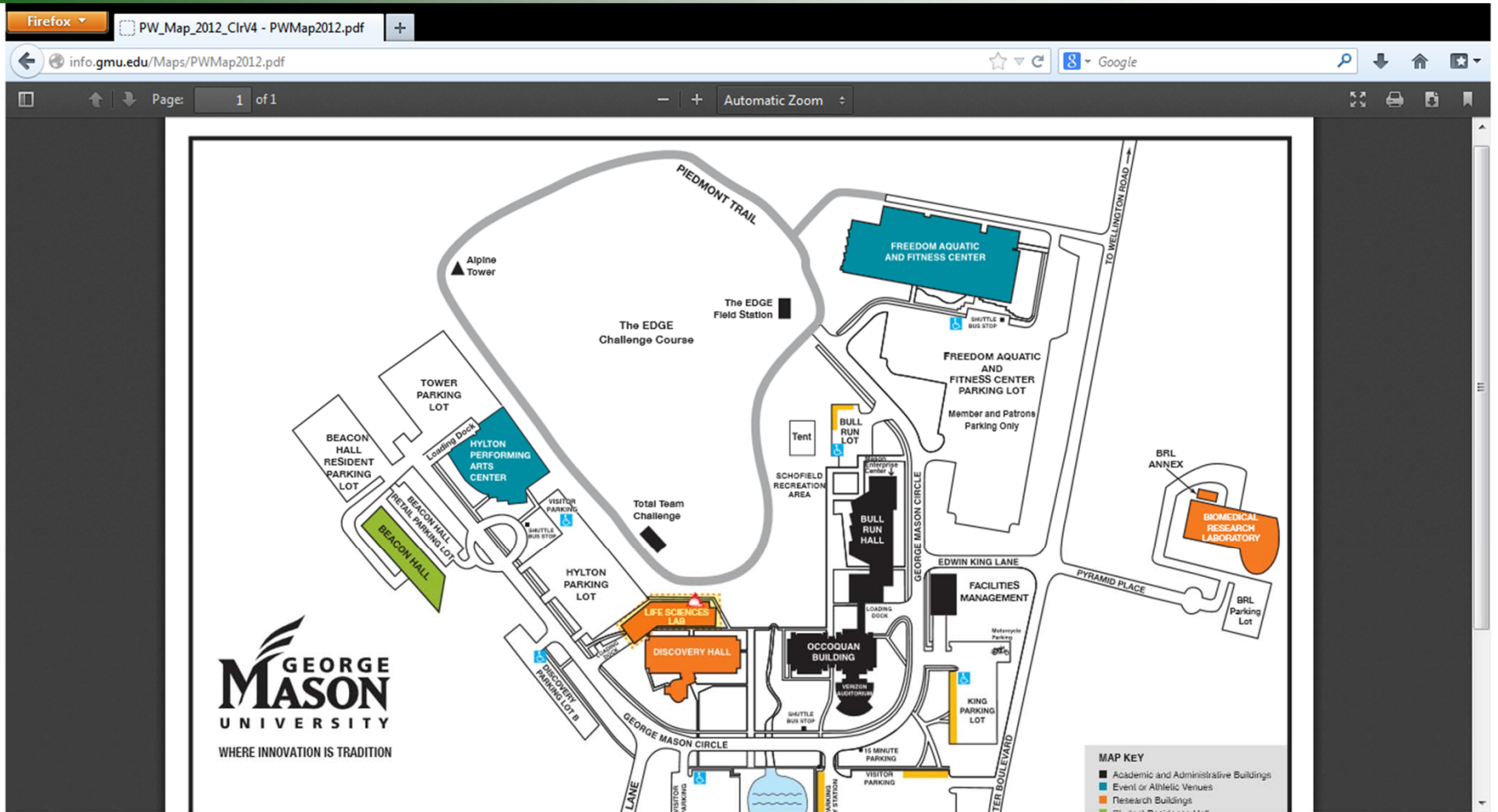




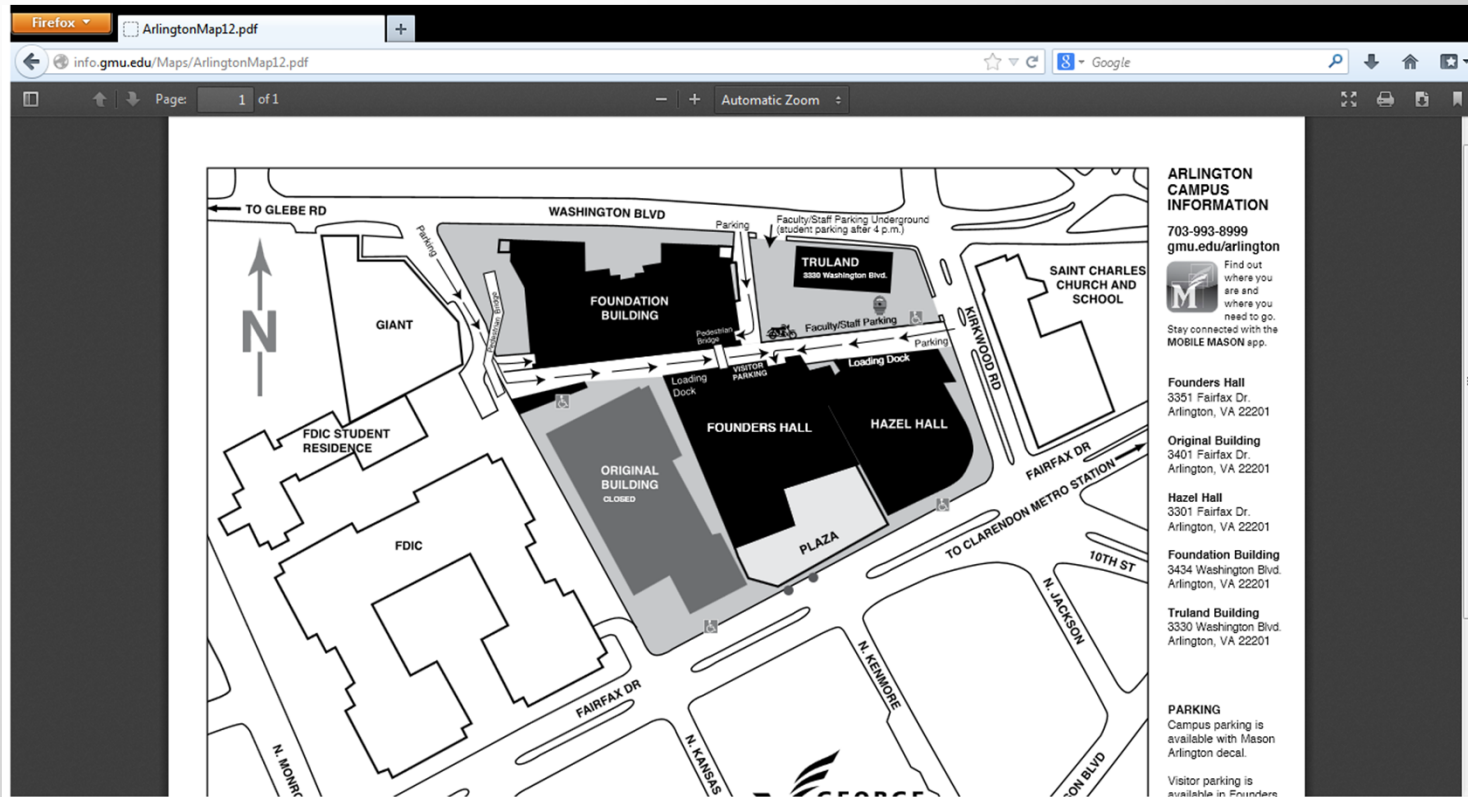
# South Façade/Campus Drive Bus Turn-off



# Science & Technology Campus



# Arlington Campus





# Arlington Campus

- Founders Hall garage-577 spaces
  - Connected to existing Hazel Hall garage
  - Handles permit and visitor parking
    - Electric vehicle charging stations
- Metropolitan Garage (GMUF Garage)
  - Mason leases 567 spaces from GMU Foundation
  - Mason does not operate garage
  - Fac/Staff & Student parking on P1,Plaza, B1, B2
  - Faculty/Staff parking ONLY on part of B3(of non-SRA spaces)-  
have converted some to student and fac/staff based on demand
  - Fac/Staff & Student parking on B4 after 6pm

# Arlington Campus

- Truland-lease ended June 30, 2013
- Mason working with Arlington County on naming/signing alley behind Founders Hall
- Arlington III building planned for future on site of Original Building
  - Would have a new parking garage connected to Founders Hall garage

# Transportation Master Plan

- Conducted in 2009-2010
- Led by consulting firm VHB
  - Done plans at Harvard, Ga Tech, UVA
- University committee of 30+ stakeholders
  - Reps from Faculty Senate, Staff Senate, Student Govt, major venues, various units, Fairfax City, Fairfax County, VDOT
- University Executive Committee
  - Sr VP, VP Univ Relations, VP Univ Life, VP Facilities, Provost
- Chaired by Director P&T and Director of Campus Planning

# Transportation Master Plan

- Monthly stakeholder meetings
- Public forums
- Focus groups
- Surveys
- SWOT analysis
- Recommendations
- Final Report
  - [http://transportation.gmu.edu/pdf/GMU\\_FairfaxCampus\\_TransMgmtPlan\\_Final.pdf](http://transportation.gmu.edu/pdf/GMU_FairfaxCampus_TransMgmtPlan_Final.pdf)

# Transportation Master Plan

- Final Report is living document to guide parking & transportation over next 10 years
  - Supports larger approved campus master plan
  - Supports increase in campus enrollment
  - Has general recommendations
    - Details to be decided in many cases
  - Has recommended physical projects
    - Pedestrian/road/parking/transportation
  - Has policy/finance recommendations



# Transportation Master Plan Highlights

- Recommends transition to zoned parking system
  - Phased in over multiple years
  - Addresses top complaint of not knowing where to park in general system as zoned system will lead to greater assurance of space based on controlling # of permits sold to each lot/zone
  - Will reduce traffic on campus (including traffic from vehicles traveling from lot to lot)

# Transportation Master Plan Highlights

- Actual zones to be determined based on many factors
  - Unique needs of each lot (e.g. Aquatics Center-Lot C)
  - Need to ensure revenue still meets budget
  - Some may include multiple lots/various times
    - Doing in-depth study of other schools (such as UMD)
    - Will be having forums to gather input on various ideas
- Will create wider array of price options
  - Some may guarantee space for higher price
  - Some may cost less (either non guaranteed or less convenient): Lot M/P \$265

# Transportation Master Plan Highlights

- Build three future parking decks
  - Preferred locations: Lot I, Lot L, Lot C
- Not have to build as many future decks by reducing single occupancy vehicle demand by 10% by 2020
  - Keep fees lower, more land available for academic, athletic, housing, research needs

# Transportation Master Plan Highlights

- Keep growing alternative transportation options so people don't have to drive
  - Shuttles
    - New Routes
      - Added Burke VRE shuttle
      - Added morning hours to Gunston's Go-Bus
    - Expand existing service to meet demand
      - Already added rush hour Metro buses so service every 15 minutes
      - Added Metro Express
        - Doubled service back and forth to SciTech (formerly PW) Campus
    - New transit center - triple bus capacity at Sandy Creek
      - Receiving \$1 million bond from Fairfax County

# Transportation Master Plan Highlights

- Pedestrian improvements
  - Widening, improving sidewalks, trails
  - Improving wayfinding (one of top findings with every group)
- Traffic
  - Improved VDOT wayfinding signs
  - Campus Drive
  - Roanoke River Rd widening
    - New turn lane into Lot K
    - Synchronize traffic signal with University Mall
  - Possible new entrances to campus

# Other Areas

- Golf Cart Policy
  - Registration/Licensing
  - Rules of who can use, where can park
- Event Coordination
- Campus Access
- Disabled Point to Point Service
  - Patriot Lift program started Fall 2014

# Questions?

## Websites/Email:

[parking.gmu.edu/parking@gmu.edu](http://parking.gmu.edu/parking@gmu.edu)

[transportation.gmu.edu/transpo@gmu.edu](http://transportation.gmu.edu/transpo@gmu.edu)

[shuttle.gmu.edu/shuttle@gmu.edu](http://shuttle.gmu.edu/shuttle@gmu.edu)

## Social Media:

[facebook.com/MasonParkingTransportation](https://facebook.com/MasonParkingTransportation)

[twitter.com/MasonParking](https://twitter.com/MasonParking)

[twitter.com/MasonShuttles](https://twitter.com/MasonShuttles)